

DINO - MAROFF project 192902.

Project owner: Kongsberg Seatex AS.

tony.haugen@kongsberg.com

Project leader: SINTEF Fisheries and Aquaculture AS.

knut.torsethaugen@sintef.no

Total budget: 12.5 mill. NOK

Support: Norges Forskningsråd: 6 mill. NOK

Duration: 2009-2011.

Partners

- **Kongsberg Seatex AS**
 - <http://www.km.kongsberg.com/Seatex>
- **Jeppesen Marine**
 - <http://www.jeppesenmarine.com/>
- **TelCage AS**
 - <http://www.telcage.no>
- **SINTEF Fisheries and Aquaculture AS**
 - <http://www.sintef.no/fish>
- **Semekor AS**
 - Contact: [Svein Ording](#)
- **Fiskeridirektoratet region Trøndelag**
 - <http://www.fiskeridir.no/>
- **Kystverket Midt-Norge**
 - <http://www.kystverket.no>



Dynamic information systems for operative decision support in the coastal zone



Ronja Nordic, Sølvrans as.

Industry innovation project supported by the
Norwegian Research Council

Objective

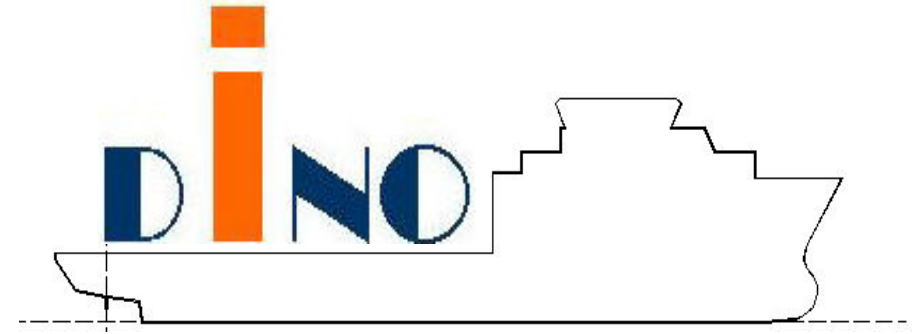
Develop and demonstrate dynamic decision support systems for weather dependent and demanding operations in the coastal zone

Activities

- Develop systems for man-machine interactions and information visualization
- Demonstrate dynamic decision support systems

Results

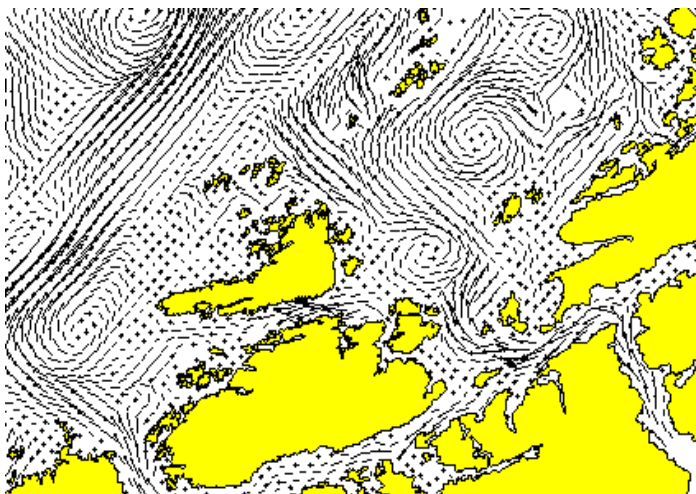
- Enhanced safety for installations
- Enhanced safety for navigation
- Improved logistics
- Optimal allocation of area
- Enhanced contingency for maritime operations
- Reduce the "Waiting on Weather" problem



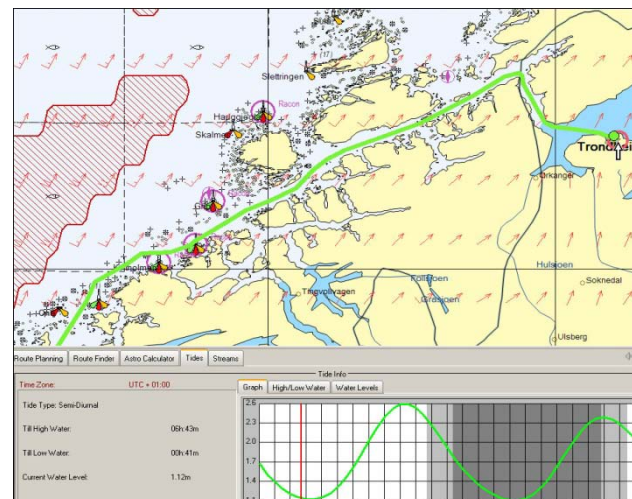
DINO shall contribute to enhanced safety and efficiency for marine operations by developing knowledge-based tools for planning operations in advance to avoid accidents

Elements

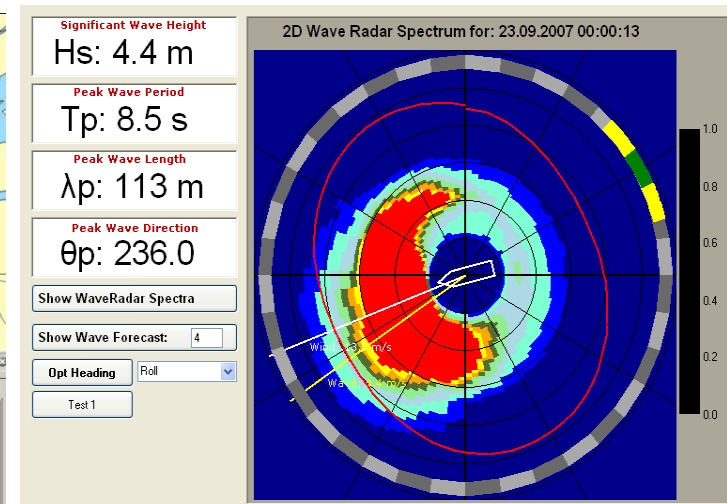
- Efficient man-machine interface
- Real time data for the conditions
- Prognosis for local conditions for sailing and operations
- Tools for dynamic route planning and efficient logistics



Current pattern, SINTEF Fisheries and Aquaculture



Route Planning Jeppesen Marine.



Operational conditions Kongsberg Seatex.